



a registered trademark by Tada Medical AB

# Tada Medical AB

Improving lives through need based R&D



## About us

### Tada Medical AB

- Founded in 2016
- Need-based R&D
- Innovative solutions
- First product – the breakaway connector ReLink®



## Accidental dislodgement of IV tubes cause harm to patients and staff

### Situation

- 3.8b tubes used annually
- 10% tubes are ripped out during use

### Consequences

- Patient injury, pain and anxiety
- Loss of expensive medication
- Toxic exposure for healthcare personnel
- 30 minutes of nursing time wasted per incident
- 23k tonnes of plastic waste per year
- €28 Bn+ in unnecessary annually healthcare costs



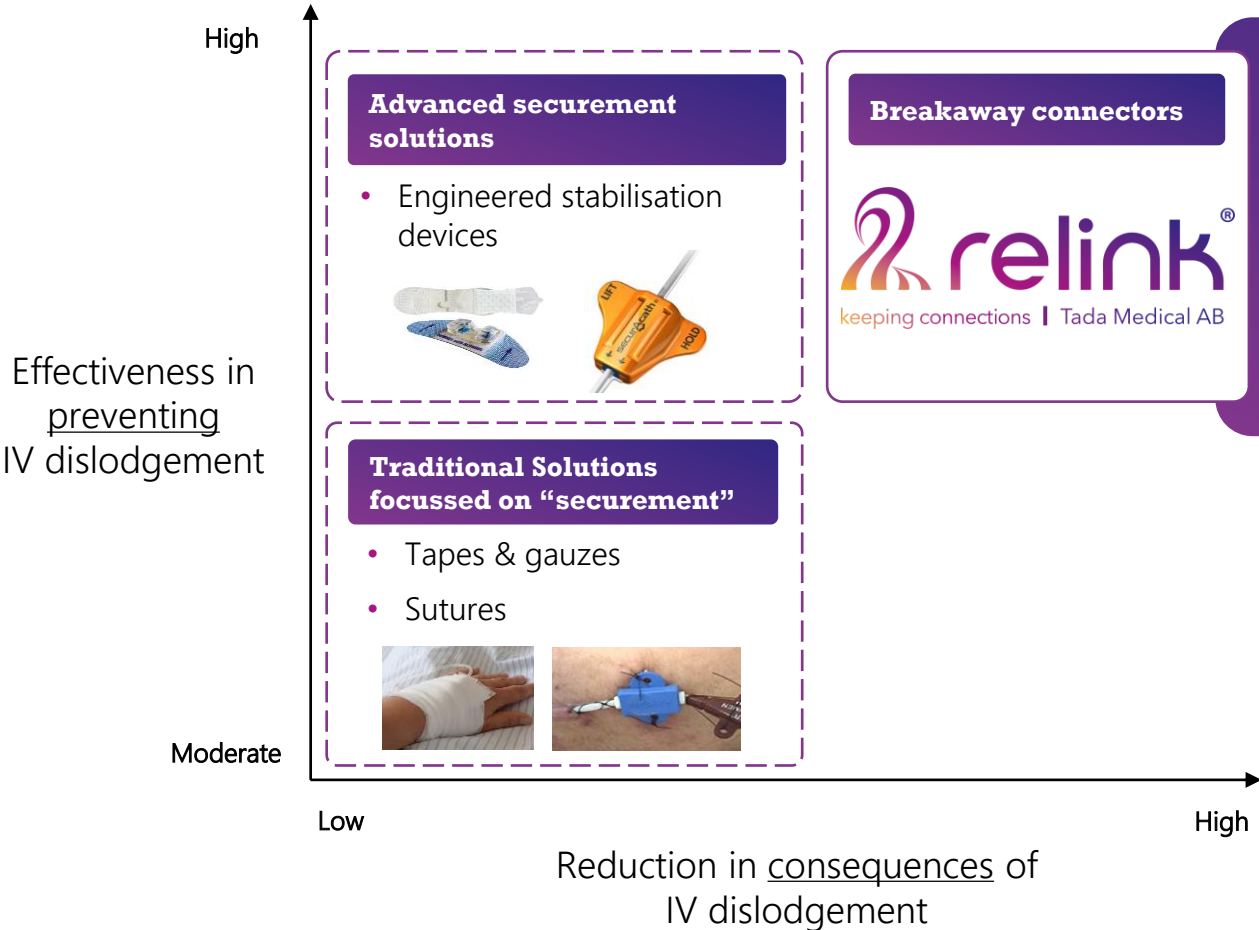
## A patented, revolutionary technology - ReLink®



### **ReLink®**

- Patented
- Fits global standard
- Scalable, low cost, mass-producible

# ReLink® - a superior technology platform




The ReLink® technology provides a superior solution to comprehensively address the incidence as well as the consequences of IV dislodgement.



# Competitive landscape

As a product, ReLink® delivers significantly better value over all the other options

ReLink®'s clear competitive advantage			Current competition				Emerging competition	
			Traditional securement devices		Engineered stabilisation devices		Other Breakaway connectors (None launched yet)	
			Tape & Gauze	Sutures	Grip-Lok & Stat-Lok	SecurAcath	Safebreak vascular	Orchid SRV
Better prevention of dislodgement	Dislodgement rate	<1%*	10% average		5-6%		< 2%	Not published
Superior management of consequences	Rapid reinstatement of therapy	●						
	No additional cost of reinstatement	●						
	Prevents exposure to hazardous fluids and vapours	●					◐	◐
	Prevents plastic & medical waste	●					◐	◐
Reduced complication possibilities	Non invasive , no possibility of MARSİ or other infections	●			◐	◐	●	●
Easy to adopt	No additional training required for healthcare professionals	●	●				●	●
	One size fits all	●	●	●			●	●
	Price to the hospital	€3 onwards	€3-4	€5-6	€6-15	€18-30	Not published	

\* Based on Tada Medical bench tests and extrapolation on published information

MARSİ – Medical adhesives related skin injury/ infection

## Benefits of ReLink<sup>®</sup>

- Protects patients from harm
- Prevents medicine and blood spill
- Effective in containing vapours
- Keeps nurses safe from toxic fluids
- Decreased time to restart therapy
- Reduced nursing time by the bedside



## One solution – several market opportunities



Gravitational IV for  
emergency care,  
elderly care,  
paediatrics etc.



Closed system transfer  
device for toxic drugs



Homecare



Veterinary use



# Cancer care is a focus market for Relink, driven by its CSTD capabilities

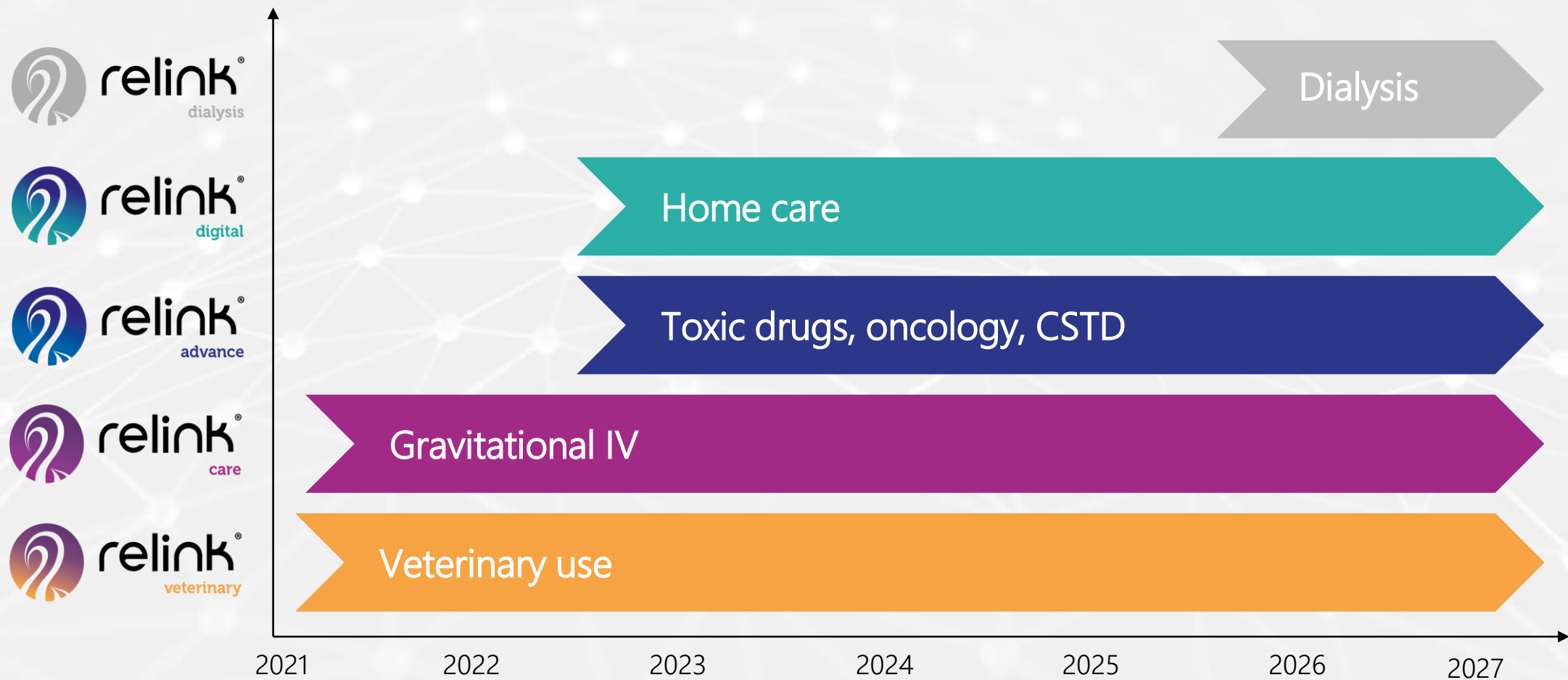
## Closed System Transfer Devices (CSTD)

- Expected to be a USD 1.8b\* market by 2026, 19%+ CAGR
- Driven by the rising prevalence of cancer cases and emerging safety guidelines

## Advantage Relink

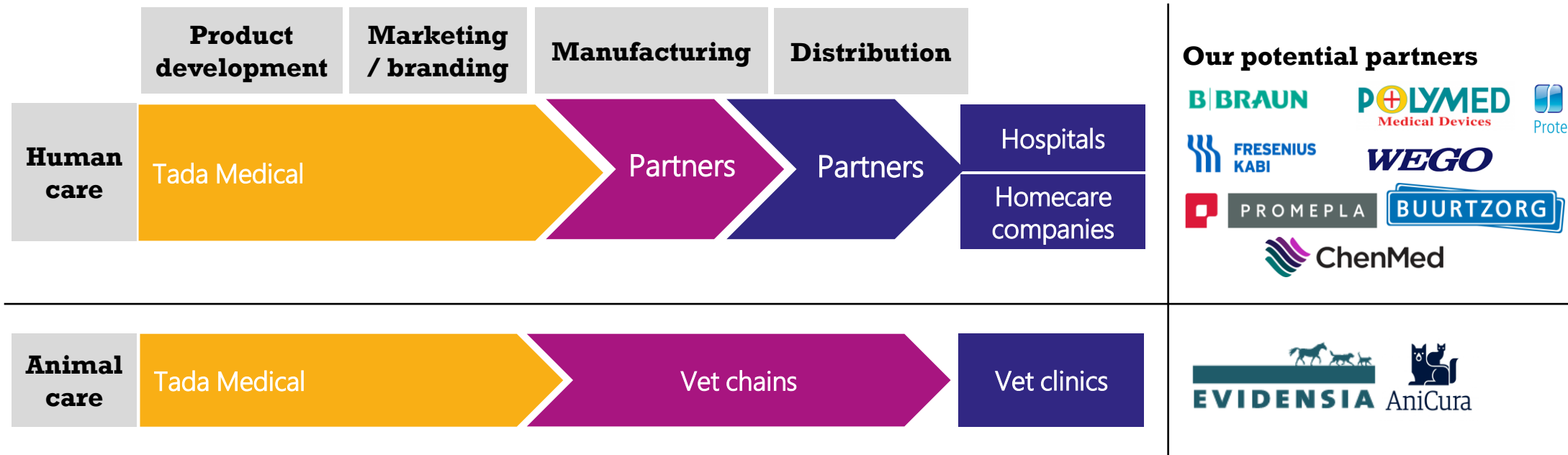
- Closed system transfer device
- Effectively prevents spillage of fluids and contains vapours
- Reduces risk for exposure to hazardous drugs and fumes
- Enables reduction of nursing time by the bedside

# ReLink® expansion plan



## Our primary route to market is through strategic collaborations

- We manufacture and distribute through partners, while continuing to focus on R&D and product development
- Pre-market launch planned for 2021



## We are developing anchors in the largest healthcare markets globally



### Germany

- Medical Valley , Erlangen



### France

- Eurasanté



### UK

- Access to NHS through the British Embassy



### USA

- US Grants- DoD, BARDA



### Spain and Portugal

- Hospital partnerships to support product development



## A combination of unique attributes makes us a valuable business

### High potential and high margin R&D business



ReLink®  
estimated  
revenue – over  
50M Euro by  
2024



New product  
pipeline

### Lower risk business model



Endorsement  
and support by  
EU (over 60% of  
our current costs  
are covered by  
grants)



Growth through  
partnerships,  
anchored on our  
patented products

### Flawless execution



A capable  
execution team



An enabling  
partner  
ecosystem

## Our skilled team

- 87 patents granted
- 1 veterinary doctor
- 1 financial strategist
- 2 MBAs
- 2 PhDs
- 2 MDs



# Our partner ecosystem

## Research partners



Swedish University of  
Agricultural Sciences



Karolinska  
Institutet



UNIVERSITY OF GOTHENBURG  
SCHOOL OF BUSINESS, ECONOMICS AND LAW



UPPSALA  
UNIVERSITET



CLINICAL  
INNOVATION  
FELLOWSHIPS



CBS  
COPENHAGEN  
BUSINESS SCHOOL  
HANDELSHØJSKOLEN

## Manufacturing & product development partners



LCPLASTIC AB



## Healthcare partners



Region Örebro län  
Universitetssjukhuset Örebro

SJD Sant Joan de Déu  
Barcelona · Hospital



KAROLINSKA  
UNIVERSITETSSJUKHUSET

## Commercial & legal partners



AWAPATENT

FINNHAMMARS

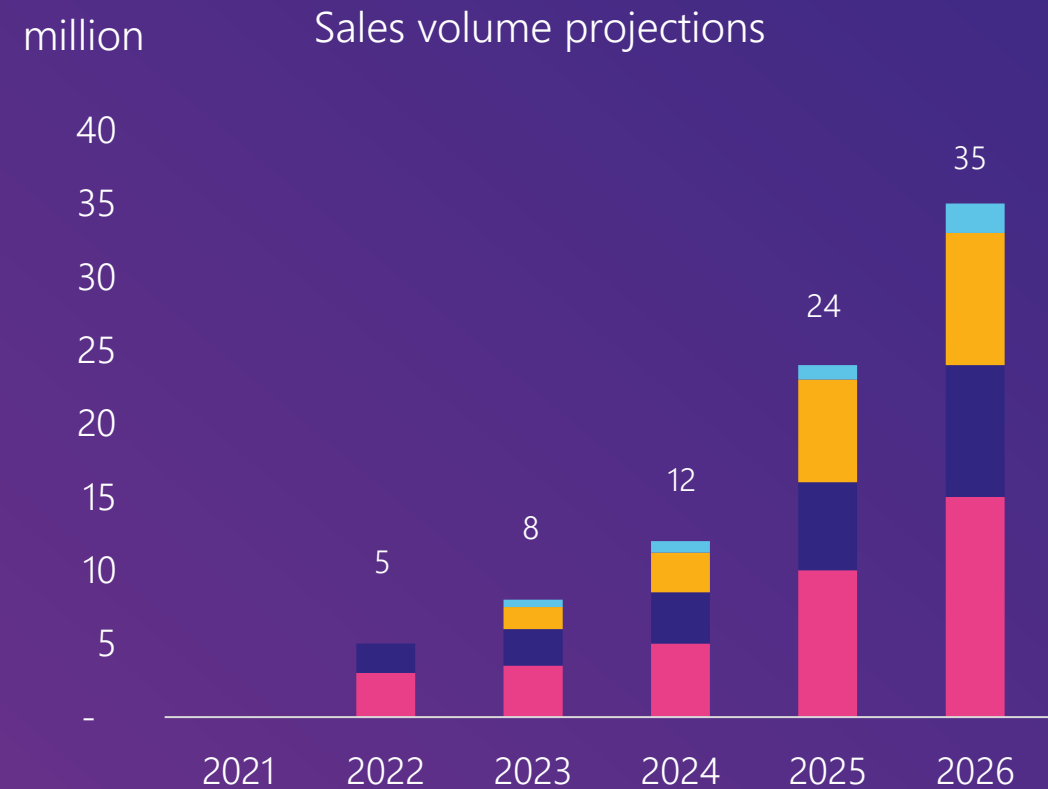
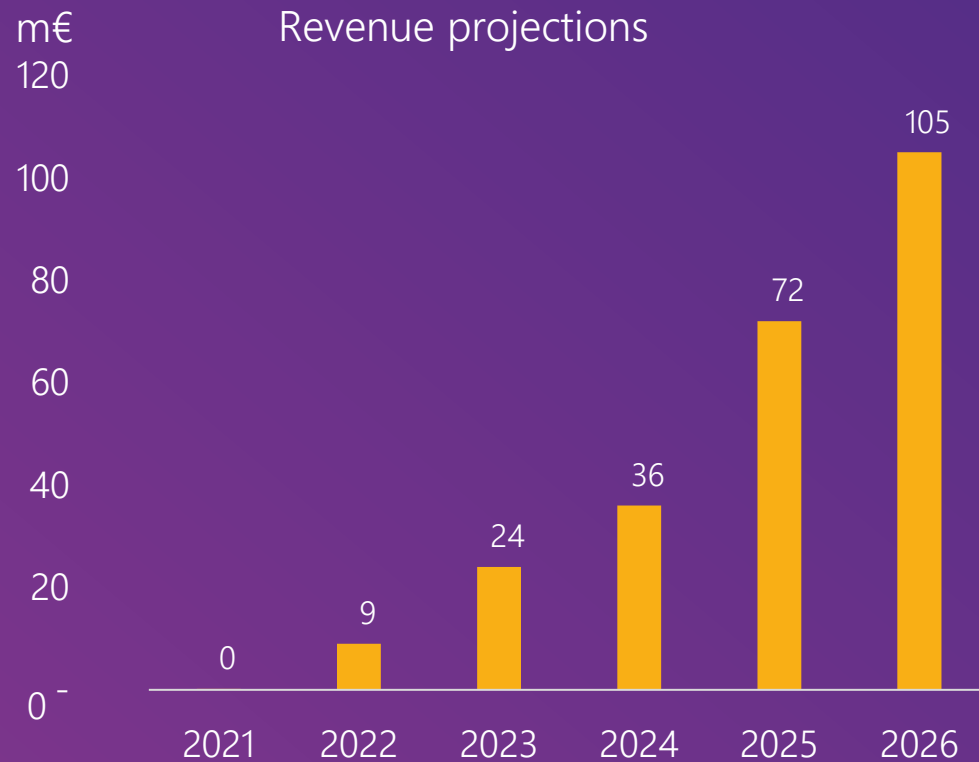
WISTRAND  
ADVOKATBYRÅ

## Innovation centres



a registered trademark by Tada Medical AB

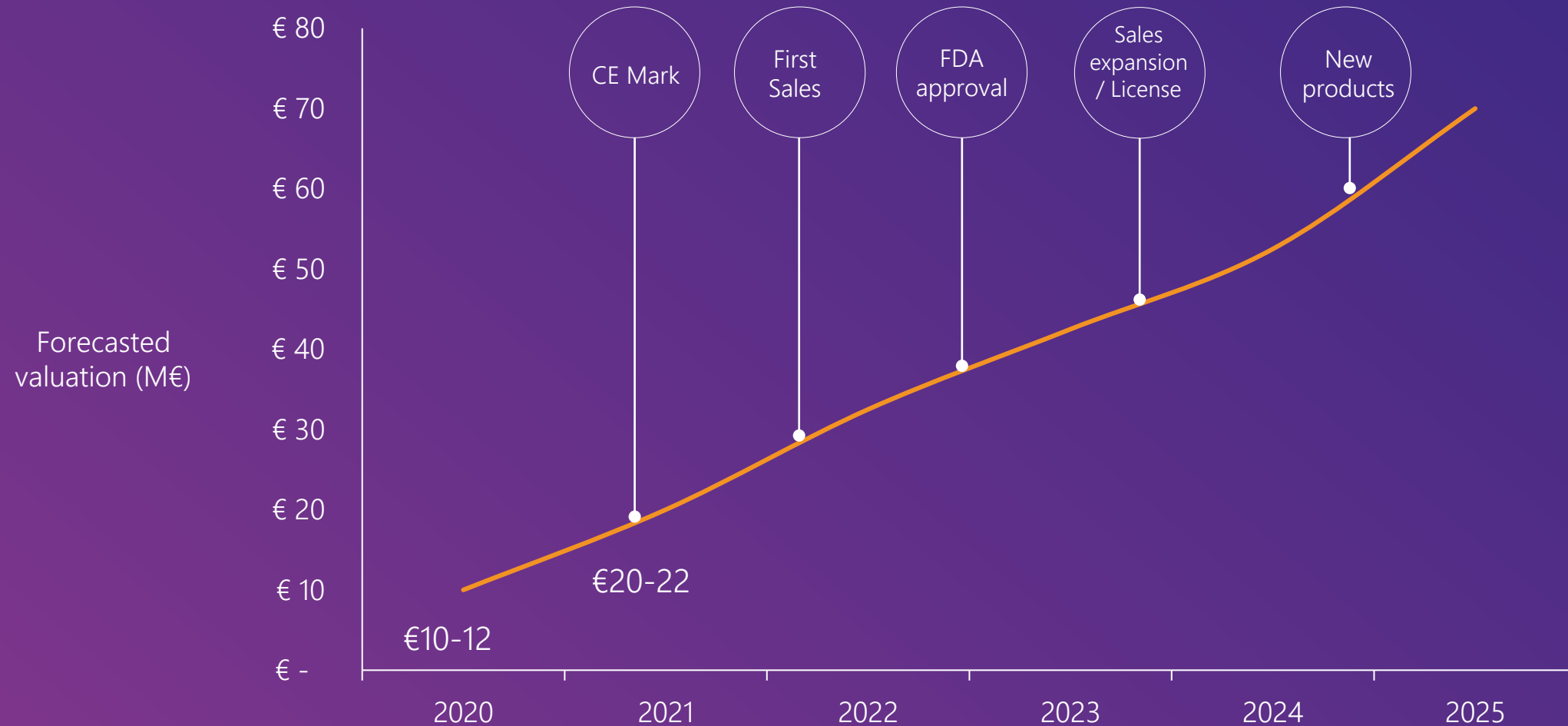
## Forecast - revenue and volume



Relink Care Relink Vet Relink Advance Relink Digital



## Milestones driving our valuation



**Thank you for  
your time**



## Contact

Katarina Hedbeck  
Tada Medical AB  
Stockholm, Sweden  
[info@tadamedical.com](mailto:info@tadamedical.com)