



YOU'LL NEVER RIDE ALONE
RIDE LINK

PITCH DECK



YOU'LL NEVER RIDE ALONE
RIDE LINK



20°

Situation

- 29,000 motorcycle accidents per year
- 700 fatal motorbike accidents
- Driving behavior is the number one cause of accidents
- 2,400 km average mileage

Complication

- Too little driver driving experience
- Misinterpretation of driving situations
- Relapse in "natural" 20 ° inclination

Solution

- Improve active safety
- Evaluation of individual driving behavior
- AI-based real-time driver assistance



YOU'LL NEVER RIDE ALONE
RIDELINK



20°



20 ° natural
inclination for
humans and animals

20°

In particular, accident scenario 1 results from falling back into a “natural” inclined position of 20 °

Scenario 1

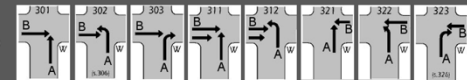
Driving accident of a rider
Without the influence of
infrastructure or roadsurface



263 / 978
Riders
(26,9%)

Scenario 2

A road user fails to give way to
motorcycle at a crossing or
junction



Motorcyclist is participant B

165 / 978
Riders
(16,9%)

Scenario 3

A motorcycle crashes into the
back of a vehicle ahead

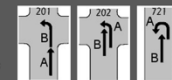


Motorcyclist is participant A

84 / 978
Riders
(8,6%)

Scenario 4

A motorcycle collides with
vehicle ahead that is turning to
the left or making a U-turn

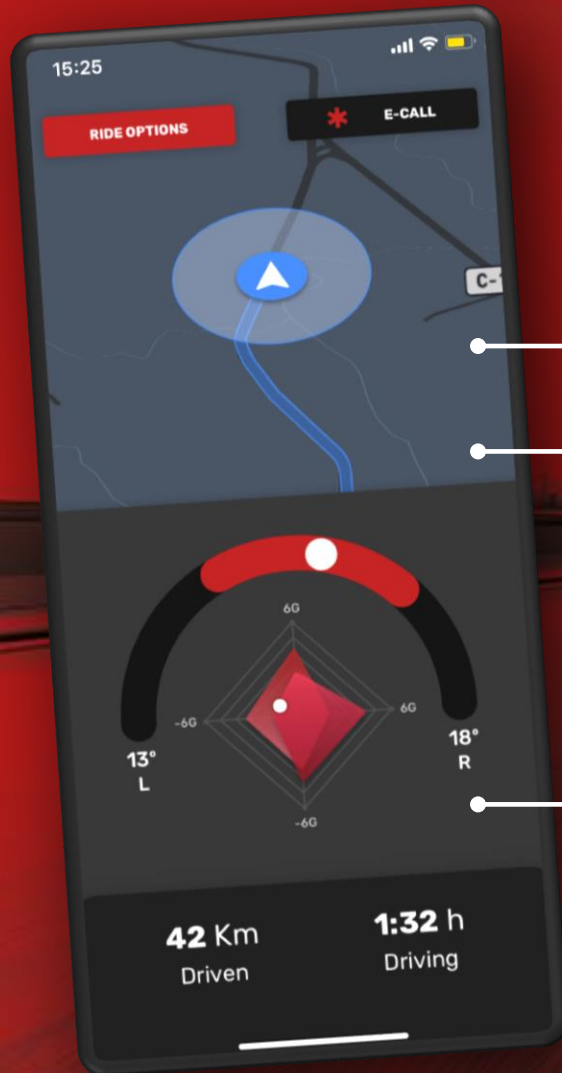


Type 201: Motorcyclist is participant A
Types 202/721: Motorcyclist is participant B

75 / 978
Riders
(7,7%)



AI-based driving assistant improves active driving safety



Weather



Street Conditions



Driving Behaviour



Accident detector

Automatic accident detection for motorcyclists in cooperation with GDV & R+V



Breakdown service

Real-time diagnosis of the motorcycle (battery, tire, engine) and additional services in the event of a breakdown

Anti-theft alarm

Motion notification via SMS, call or push notification as well as live location via app or website.

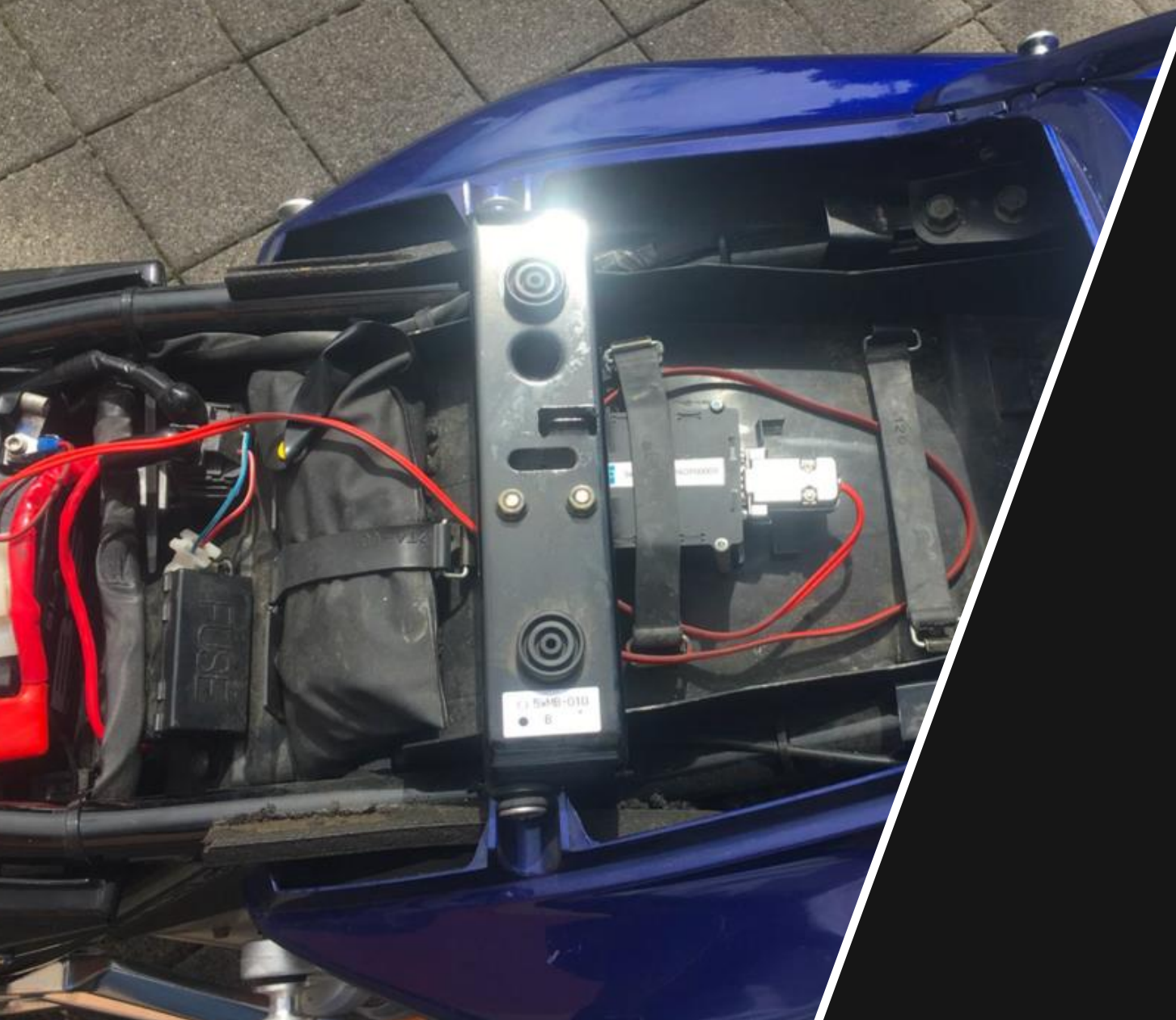


Routing & Community

Route tracking independent of the smartphone, recording of the driving profile, navigation and group functions as well as community, dealer backend.



YOU'LL NEVER RIDE ALONE
RIDE LINK



- Connection of the RideLink adapter to the battery and (optional) to the CAN bus of the motorcycle
- Provision of data by internal sensors (GNSS, ACC, gyro, battery), external sensors (tire pressure / temperature) and vehicle data (km/h, RPM, gear)
- Direct communication between smartphone and RideLink dongle via Wi-Fi
- Direct communication between backend and RideLink dongle via 2G
- RideLink can also be used as "dongle only" or "app only"



YOU'LL NEVER RIDE ALONE
RIDE LINK

- Improvement of active driving safety through AI-based driving assistant
 - Live data from internal and external sensors as well as via the vehicle bus
 - Cooperation with the German insurance industry (R+V / GDV)
 - Dealer portal for direct customer communication with the customer
- RideLink improves the active & passive safety of motorcyclists

Running Costs

Insurance
Fuel
Tax

ca. 650,00 p.a.*

Maintenance

Inspection
Tires
Wear parts

ca. 750,00 p.a.*

Accessoires

Tuning & Styling
Navigation & Communication
Spare parts & tools

ca. 300,00 p.a.*

Equipment

Clothing, Boots & Gloves
Helmets & Glasses
Baggage

ca. 250,00 p.a.*

Travel

Organizers & Accommodations
Transport & Logistics
Maps & Literature

ca. 500,00 p.a.*

Other

Trainings
Events
Trade Fairs

ca. 200,00 p.a.*

