

cbrgenomics

genetically informed medicine

THE POWER OF GENOMIC MEDICINE

Often people get the wrong treatment.....

HIGH CHOLESTEROL

42% of patients have adverse reactions to Simvastatin.

... Simply because people are not identical...

DIABETES

NHS-UK: 25% of insulin-dependent patients, under age of 20, have a genetic form of the disease, which is treatable with a daily pill.

... Or because people are misdiagnosed!

Genomics-at-your-Service

GENETIC TEST MARKET

B2B

**Prescribed
Genetic
tests
\$22 B**

B2C

**Direct to
Consumer
\$2.5 B**

GENETIC TEST MARKET

B2B

Clinical Grade
Expensive (>\$1500)
Data is not re-used
"Single-use"

B2C

Cheap (<\$150)
Non-Clinical
Lifestyle

Clinical Grade
Sequence Once

DNA Data is re-used

Costs are diluted as DNA data is used

Empowered
Health Management

B2C2B

Closing the gap:

New market space

**A new tool for Physicians
to access DNA data
in clinical practice**

PATENTED TECHNOLOGY ENABLER



**CONTROLLED
DATA ACCESS**



**SECURE DATA
STORAGE**



**FULL DATA
ANONYMITY**

**Secure dual system for
storage, access and
query genomic data**

PCT/EP/2016/079686



**AUTOMATED
GENETIC QUERY
& REPORT**



cbrogenomics
genetically informed medicine

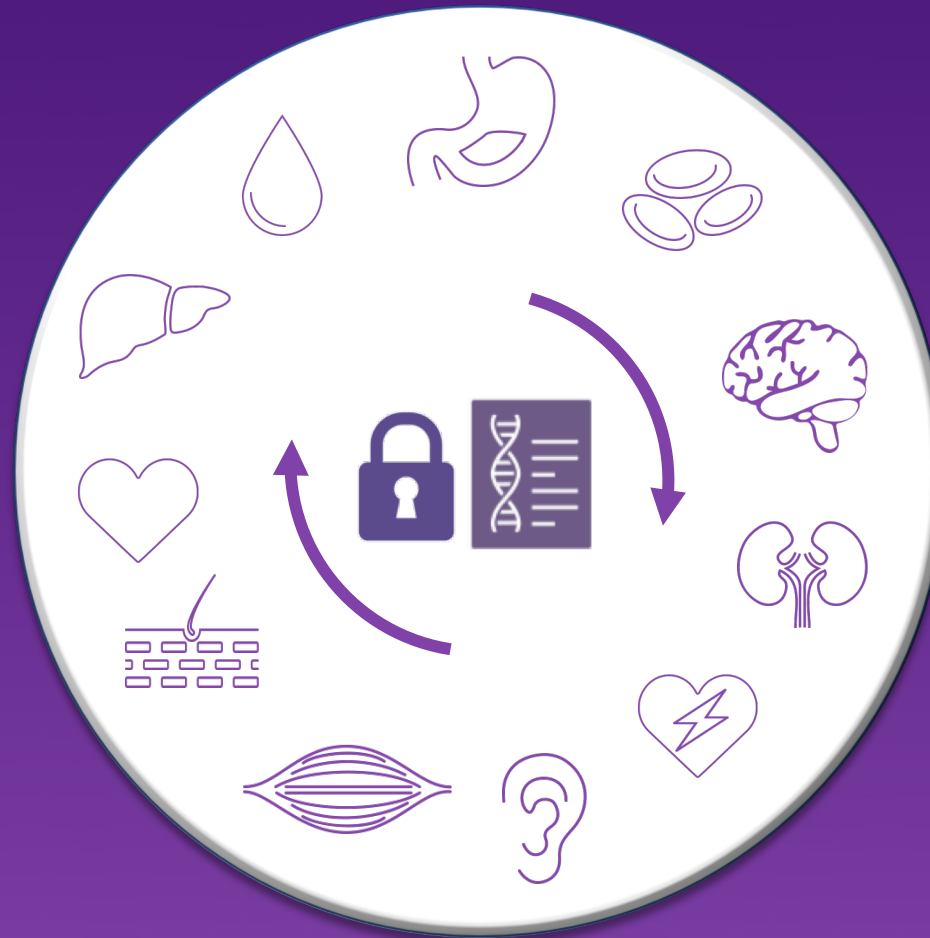
A TOOL TO EVERY PHYSICIAN



AUTOMATED GENETIC QUERY & REPORT

Checking the DNA sequence will be **as trivial**
and **as important** as blood testing.

MARKET ADOPTION: USABILITY

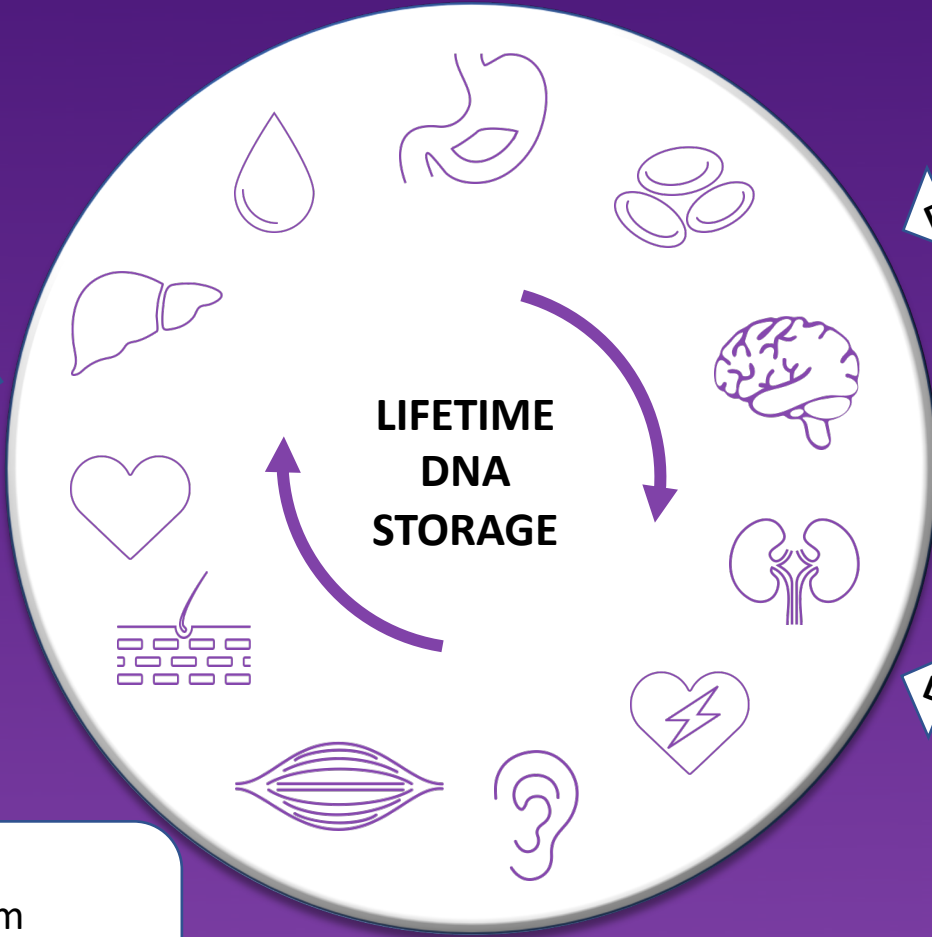


Checking DNA sequence will be
1st-tier in the clinical decision tree

MARKET APPROACH & TRACTION GAIN



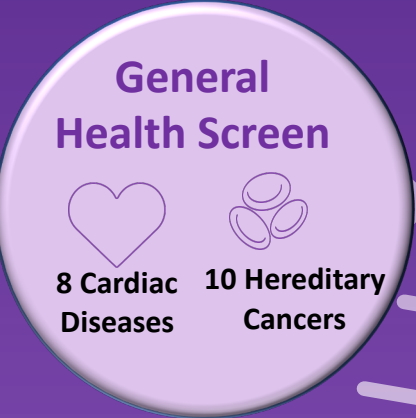
DNA seq



DNA seq



DNA seq

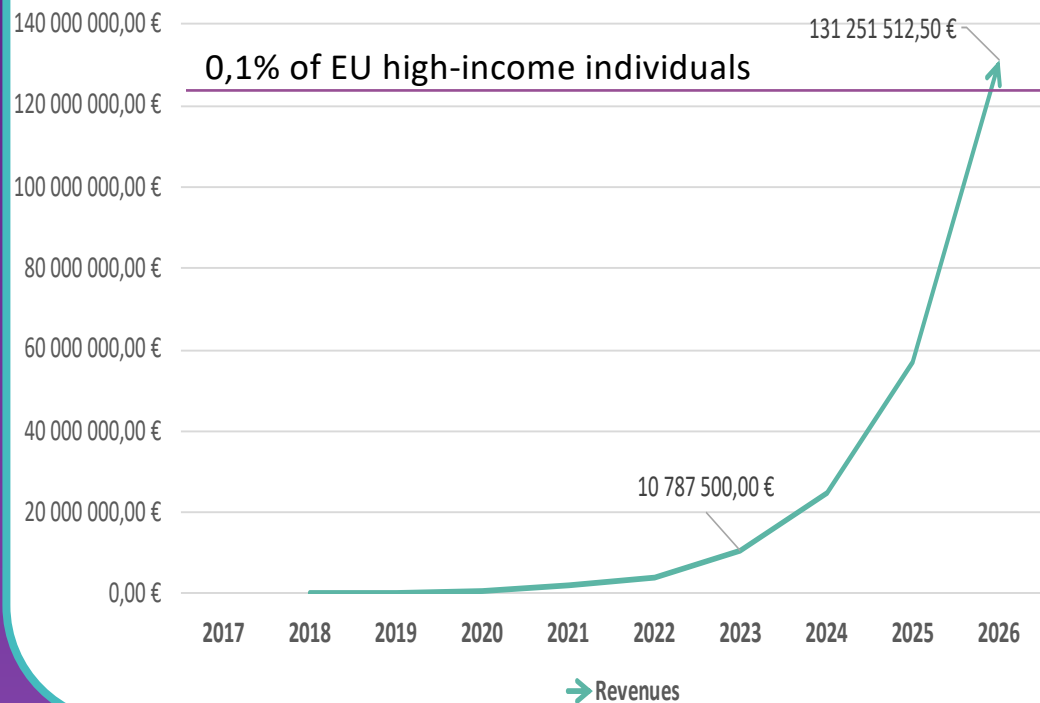


Pilots:
Portugal - 155 Stored Exomes, from children with learning disabilities, followed on the University of Coimbra Hospital's
Germany – Since 2016, in 3 clinical settings.

PROJECTED BUSINESS EVOLUTION

✓ **Market Potential (Europe): € 367B**

✓ **Target: 0,1% of high-income (€ >100k) -> € 122M**



✓ Digital business model allows fast growth independent of lab space or large equipment needs.

PROJECTED MARKET EVOLUTION

Untapped Market

**Routine use of Genetics as Decision
Support in Clinical Practice**

Cholesterol, Diabetes, Familial Heart
Diseases, Familial Cancer, etc, etc...

Personalized Medicine: \$~1.7T

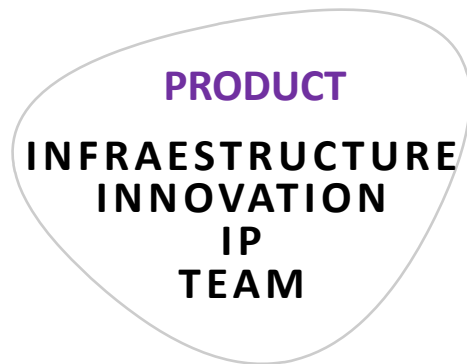
**Prescribed Genetics:
\$ 22.2 B**

**Direct to Consumer:
\$ 2.5 B**

INVESTMENT SOUGHT

Goal: €7 M Series A

To raise by 2020H2 to support the Business Development Plan for 2020-2023



18%



48%



24%





Genomics-at-your-Service

Ana Catarina Gomes | PhD & MBA
acgomes@Coimbra-genomics.com

GENETIC TEST MARKET SEGMENTATION & COMPETITION

Highly Segmented:

sequencing technology
Illumina, Lifetech, Pacbio

bioinformatic tools for
labs, researchers and
geneticists

Sophia Genetics, Knome

links between genes and
disease

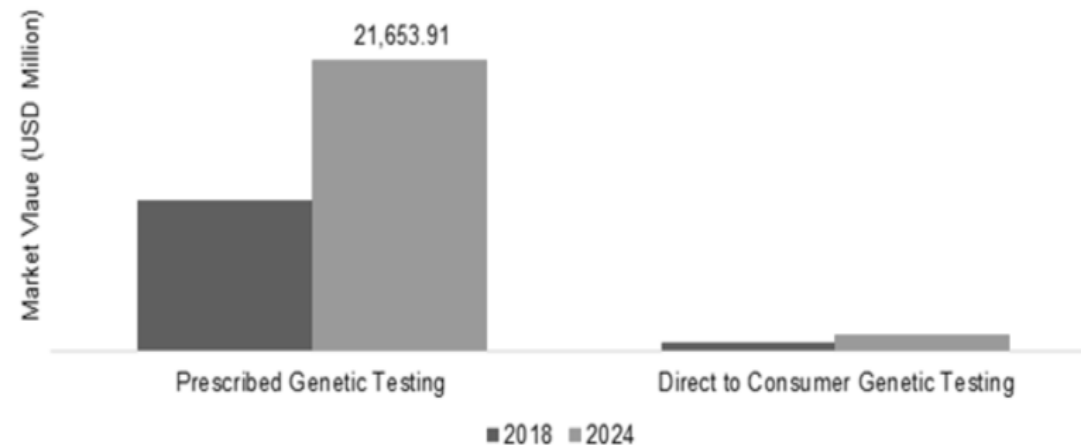
Decode

targeted genetic analyses

InVitae, Foundation

Medicine, LifeCode

Prescribed vs. Direct-to-Consumer



Strong B2C

23&me
ATLAS
Ancestry
(etc...)

THE CORE TEAM



Ana Catarina Gomes

PhD Mol. Biology & MBA



Sónia Martins

PhD Computational Biology



Sofia Pinto

PhD Bioinformatics



Catarina Correia

PhD Genetics



CARLOS FARO

Chairman

Co-Founder.

Ex- Director of Biocant Park.

Green Innovations Biotech.



GONÇALO QUADROS

Co-founder

CEO of Critical Software.

BOARD



CARLOS FIOLHAIS

Co-founder

University of Coimbra.



MIGUEL BOTTO

Portugal Ventures'
Life Sciences & Med
Tech Sector.

2018-2021 Milestones

Product Development + Sales

